

## Paper Title

First Author<sup>1\*</sup>, Second Author<sup>2</sup>, Third Author<sup>1</sup> and Fourth Author<sup>3</sup>

<sup>1</sup>(1st Affiliation) Department Name, Faculty Name. Name of Organization, City, Country;

<sup>2</sup>(2nd Affiliation) Department Name, Faculty Name. Name of Organization, City, Country;

<sup>3</sup>(3rd Affiliation) Department Name, Faculty Name. Name of Organization, City, Country;

Received Month Day, Year; Accepted Month Day Year; Published Month, Day, Year

### ABSTRACT (*Level 1 heading*)

This electronic document is a “live” template. The various components of your paper [title, text, tables, figures and references] are already defined on the style sheet, as illustrated by the portions given in this document.

**Keywords:** Component; Formatting; Style; Styling; (Insert up to 8 keywords).

### INTRODUCTION (*Level 1 heading*)

This template, created in MS Word 2013, provides authors with most of the formatting specifications given in the instructions to authors and needed for preparing electronic versions of their papers. All standard paper components have been specified for three reasons: (a) ease of use when formatting individual papers, (b) automatic compliance to electronic requirements that facilitate the production of electronic products and (c) conformity of style throughout the journal paper and journal. Margins, column widths, line spacing, and type styles are built-in. Examples of the type styles are provided throughout this document and are identified in italic type within parentheses.

### OBJECTIVES (*Level 1 heading*)

Clearly identify the objectives of the paper in this section.

### EASE OF USE (*Level 1 heading*)

#### Selecting a Template (*Sub heading*)

This template has been tailored for output on the custom paper size (21 cm x 28.5 cm). The margins are set as follows: top= 1”, bottom= 1”, right=0.75”, left = 0.75”, space between column =0.2”. The paragraphs must be indented. All paragraphs must be left justified and right justified.

#### Maintaining the Integrity of the Specifications (*Sub-sub heading*)

The template is used to format your paper and style the text. All margins, column widths, line spaces, and text fonts are prescribed; please do not alter them. Your paper is one

part of the entire Journal proceedings, not an independent document. Please do not revise any of the current designations.

**Text Font (*Sub-sub-sub heading*):** The entire document should be in Times New Roman font size 10. Paper title must be centered, bold, Times New Roman font size 15 and the first letter of each word capitalized. Author names must be in Times New Roman font size 11, bold and centered. Author affiliation must be in Times New Roman font size 8 and italic. Corresponding author should be labeled with a superscripted asterisk following the corresponding affiliation number. Corresponding author, citation and copyright information should be listed at the bottom of the first page of the paper (see below), using Times New Roman font size 8. Corresponding author, citation and copyright headings should be bolded. Level 1 heading must be left justified, bold, Times New Roman 10 all with upper case. Level 2 headings must be left-justified, bold, Times New Roman 10 and the first letter of each word capitalized. Level 3 heading must be left-justified, bold, italic, font size 10 and the first letter of each word capitalized. Level 4 headings must be left-justified, bold, italic, font size 10 and the first letter of each word

**Corresponding author:** Professor A. E. Ghaly, Department of Process Engineering and Applied Science, Faculty of Engineering, Dalhousie University, Halifax, Nova Scotia, Canada; [Tel:902-494-6014](tel:902-494-6014); Email: [abdel.ghaly@dal.ca](mailto:abdel.ghaly@dal.ca)

**Citation:** Ghaly A, Brooks S & Kumar S (2015) Optimization of Enzymatic Transesterification of Beef Tallow Using *Candida Antarctica* Novozyme 435 with 2-Butanol and Hexane. International Journal of Bioprocess and Biotechnological Advancements, 1(1):45-56

**Copyright:** ©2015 Ghaly A, Brooks S & Kumar S. This is an open-access article distributed under the terms of the Creative Commons Attribution License, which permits unrestricted use, distribution, and reproduction in any medium, provided the original author and source are credited.

capitalized. The body of level 4 section immediately follows the heading in the same paragraph.

**PREPARE YOUR PAPER BEFORE STYLING (Level 1 heading)**

Before you begin to format your paper, first write and save the content as a separate text file. Keep your text and graphic files separate until after the text has been formatted and styled. Do not use hard tabs, and limit use of hard returns to only one return at the end of a paragraph. Do not add any kind of pagination anywhere in the paper. Do not number text heads.

**Abbreviations and Acronyms (Sub-heading)**

Define abbreviations and acronyms the first time they are used in the text, even after they have been defined in the abstract. Do not use abbreviations in the title or headings unless they are unavoidable.

**Units (Sub-heading)**

Use SI as primary units. English units may be used as secondary units (in parentheses). Use a zero before decimal points: “.025”, not “.25”. Use “cm<sup>3</sup>”, not “cc”.

**Equations (Sub-heading)**

The equations are an exception to the prescribed specifications of this template. You will need to determine whether or not your equation should be typed using either the Times New Roman or the Symbol font (please no other font). Equations should be edited by Mathtype, not in text or graphic versions. Number equations consecutively. Equation numbers, within parentheses, are to position flush right, as in (1), using a right tab stop.

$$MC = \frac{M_1 - M_2}{M_1} \times 100 \tag{1}$$

Where:

- MC is the moisture content (%)
- M<sub>1</sub> is the initial weight of the wet sample (g)
- M<sub>2</sub> is the weight of the dried sample (g)

Be sure that the symbols in your equation have been defined immediately following the equation. Use “Equation 1”, not “Eq. (1)” or “Equation (1)”, and at the beginning or in the middle of a sentence.

**USING THE TEMPLATE (Level 1 heading)**

After the text edit has been completed, the paper is ready for the template. Duplicate the template file by using the Save as command. In this newly created file, highlight all of the contents and import your prepared text file. You are now ready to style your paper.

**Authors and Affiliations (Sub-heading)**

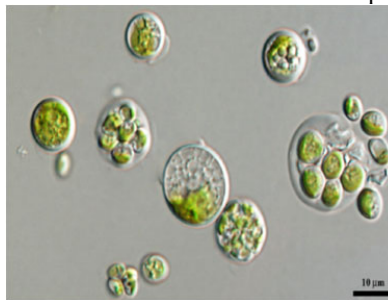
The template is designed so that author affiliations are not repeated each time for multiple authors of the same affiliation. Please keep your affiliations as succinct as possible (do NOT post your job titles, positions, academic degrees, zip codes, names of building, street, district, etc.). This template was designed for two affiliations. You can adjust the template for authors with one affiliation or more than two affiliations.

**Identify the Headings (Sub-heading)**

Headings are organizational devices that guide the reader through your paper. There are two types: component headings and text heads. Component headings (Level 1 headings) identify the different components of your paper and are not subordinate to each other. Examples include ABSTRACT, INTRODUCTION, OBJECTIVE, MATERIALS AND METHODS, RESULTS, DISCUSSION, CONCLUSIONS, ACKNOWLEDGMENTS and REFERENCES. Text headings (Sub-headings) organize the topics on a relational, hierarchical basis. If there are two or more sub-topics, the next level headings (Sub-sub-heading) should be used if there are not at least two sub-topics, then no subheads should be introduced.

**Figures and Tables (Sub-heading)**

Place figures and tables at the top or bottom of columns. DO NOT place them in the middle of columns. Large figures and tables may span across both columns. Figure captions should be below the figures whereas table heads should appear above the tables. Insert figures and tables after they are cited in the text (at the bottom of the column or the top of the next column, or spanning across both columns either at the top or the bottom of the page). For the figure and table captions use “**Figure 1.**” and “**Table 1.**” in bold fonts. If the table caption continues on several lines the second and following lines should be indented. The text of caption titles should be Times New Roman font size 10, justified with a “.” at the end of the caption title. Use words rather than symbols or abbreviations when writing Figure axis labels to avoid confusing the reader. If include-ing units in the label, present them within parentheses. Label axes only with units just “A/m”. Do not label axes with a ratio of quantities and



**Figure 1.** Example of figure caption.

**Table 1.** Table type styles.

Factors	Level	N	Mean Yield	Tukey's Grouping*
Species	Marine Water	9	1763768	A
	Freshwater (v/v)	9	584133	B
CO <sub>2</sub> :Air	3:97	6	664313	A
	6:94	6	1382922	B
	9:91	6	1474618	B

Graphs may be full color. Use only SOLID FILL COLORS which contrast well both on screen and hardcopy as shown in Figure 2. If the figure caption continues on several lines the second and following lines should be indented. When using photographs make sure the resolution is adequate to reveal important details as shown in Figure 1.

#### ACKNOWLEDGEMENTS (Level 1 heading)

Use same font size for the content of acknowledgements section.

#### REFERENCES (Level 1 heading)

Number the references in chronological order as they appear in the text in square brackets “[ ]”. When referring to a specific research publication, list the name of the author and substitute the year with the corresponding number as it appears in the document.

##### 1. Examples for a single author

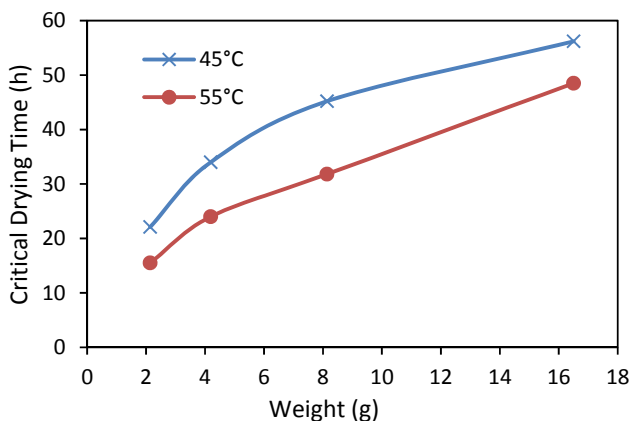
Peterson [1] has shown that ... This is in agreement with the results obtained by several authors [2-5].

##### 2. Examples for two authors

Smith and White [6] reported that..... This was later found to be incorrect [7].

##### 3. Examples for three or more authors

Moore et al. [8] stated that ..... Similar results were reported recently [9].



**Figure 2.** A sample of a line graph with colors that contrast well both on screen and on black and white hardcopy.

The list of references should include only those cited in the manuscript and arranged chronologically in the manner in which they appear. Titles of journals should be given in full. 'In press' can only be used to cite manuscripts actually accepted for publication in a journal. Citations such as 'manuscript in preparation' or 'manuscript submitted' are not permitted. Authors must provide Digital Object Identifier (DOI) number for all references. If there is no DOI for any reference, author may provide its ISSN or URL/direct accessible web link for verification purpose. References without DOI or internet link are not acceptable. The following format should be adhered to.

#### Journal Papers

- Calik P, Yilgora P, Ayhanb P, Demir AS (2004) Oxygen transfer effects on recombinant benzaldehyde lyase production. Chemical Engineering and Science, 59 (22-23):5075-5083. DOI:10.1016/j.ces.2004.07.070.

#### Text Book

- Navabi Z (1998) Analysis and modeling of digital systems. 2nd Ed. McGraw Hill, New York, USA. ISBN: 0070464790, pp: 632.

#### Book Chapter

- Katz RH (1986) Computer-aided design databases. In: New Directions for Database Systems, Ariav G, Clifford J, (Eds.), Intellect Books, Norwood, New Jersey, USA, pp: 110-123. ISBN: 0893913448.

#### Conference Proceedings

- Magott J, Skudlarski K (1989) Combining generalized stochastic petri nets and PERT networks for the performance evaluation of concurrent processes. Proceedings of the 3rd International Workshop on Petri Nets and Performance Models, Dec. 11-13, IEEE Xplore Press, Japan, pp: 249-256. DOI: 10.1109/PNPM.1989.68558.

#### Government Publications

- United Nations (2001) Indicators of sustainable development: guidelines and methodologies. United Nations Press, New York, USA.

#### Online Publications

- Lal R (1995) Sustainable management of soil resources in the humid tropics. United Nations University Press, Tokyo, Japan.  
<http://www.unu.edu/unupress/unupbooks/uu27se/uu27se00.htm> (Accessed on March 17, 2012)

#### Generic Website

- UNEP (2002) Cleaner production assessment in industries production and consumption branch. United Nations Environment Program.

[http://www.unepie.org/pc/cp/understanding\\_cp/cp\\_industrie\\_s.htm](http://www.unepie.org/pc/cp/understanding_cp/cp_industrie_s.htm) (Accessed on February 13, 2011)

***Theses***

8. Alkoaik F (2005) Fate of plant pathogens and pesticides during composting of greenhouse tomato plant residues. Unpublished dissertation in partial fulfillment of the requirements for the degree of Doctor of Philosophy, Dalhousie University, Halifax, Nova Scotia, Canada.