

A New Technique Prevent from Cement Adhesion to Abutment Surface by Using Liquid Latex Barrier

Zühre Belde Buz^{1*} and Bahadır Ersu²

¹Department of Prosthodontics Sıhhiye, Graduate student, Graduate Prosthodontics, Hacettepe University Faculty of Dentistry, Ankara, Turkey

²Department of Prosthodontics Sıhhiye, Professor, Hacettepe University Faculty of Dentistry Ankara, Turkey.

Received July 25, 2021; Revised August 13, 2021; Accepted August 16, 2021

ABSTRACT

Purpose: After cementing of implant-supported cement-retained restorations, the complete removal of the cement is a serious problem. This article describes a new technique *in vitro* condition where liquid latex barrier is applied around the implant abutment before seating to prevent the adhesion of cement to the subgingival of the abutment.

Material and Methods: 20 standard models with implant analogs embedded in acrylic blocks and artificial silicone gums at a height of 4 mm were prepared. Subsequently, anatomical abutments (4.5mm in diameter and gingiva height 2.5-4mm) were torqued on the models. The models were divided into two groups according to the cementation procedure (cleaning with conventional sound and cleaning with liquid latex barrier technique). A blinded investigator attempted to remove all cement excess. Thereafter, the entire reconstruction was unscrewed and analyzed for the overall amount and the depth of residual cement. For the two groups, the observed power of the study for Mann Whitney U was 0.762.

Results: In the control group, the total surface area of residual cement remaining below the gingiva is 6.72 ($\pm 4,10$) mm² in average and 0.00 (± 0.00) mm² in the experimental group. As a result; there is a statistically significant difference between the control and the experimental group in terms of the surface area of the total residual cement below the gingiva ($p < 0.001$).

Conclusions: This technique is a useful method for better cleaning on the abutment. It minimizes residual cement *in vitro* conditions.

Keywords: Cementation, Dental implant abutment, Residual cement, Cement-retained restorations

Abbreviations: mm: millimeter (unit of length); CAD/CAM: Computer aided design/ Computer aided manufacturing; PMMA: Polimetilmetakrilat; Kg: Kilogram (unit of weight); mm²: square millimeter (unit of area); μ m: Micrometer (unit of length); Ncm: Newton centimeter; %: Percent; PTFE: Polytetrafluoroethylene

INTRODUCTION

The unfavorable effects of excess cement on the success of dental implants have been discussed and studied in literature many times. In a current systematic review, the presence of cement is identified as a possible risk factor for peri-implant diseases [1]. Subgingival cement is difficult to detect and remove by the dentist only with a dental explorer. It causing more scratches and gouges on restorations and abutments than they realize [2]. Therefore, various cement cleaning methods have been reported in the literature to remove excess residual cement after cementation. Hess TA [3] describes a stretching polytetrafluoroethylene tape technique in which Polytetrafluoroethylene (PTFE) tape is placed around the implant abutment before seating to protect the adhesion of cement to the subgingival aspect of the abutment whether it is metal, porcelain, or zirconia. It is a simple

technique and PTFE tape will not enlarge the peri implant sulcus because it is less than 50 μ m thick when stretched. On the contrary to dental restorations, the use of cord is no longer suitable for preventing cement in peri-implant tissues. The cord increases the potential space of the peri implant sulcus, thereby increasing the flow of cement apically and

Corresponding author: Zühre Belde Buz, FORDENT clinic, Gökusu mah, Ertuğrul bey cad. Meydan Eryaman Center A blok no:27 2/1H Etimesgut, Ankara, Turkey, Tel: +90(555)7439714; E-mail: belde_akkaya@hotmail.com

Citation: Buz ZB & Ersu B. (2022) A New Technique Prevent from Cement Adhesion to Abutment Surface by Using Liquid Latex Barrier. J Oral Health Dent, 5(2): 392-398.

Copyright: ©2022 Buz ZB & Ersu B. This is an open-access article distributed under the terms of the Creative Commons Attribution License, which permits unrestricted use, distribution, and reproduction in any medium, provided the original author and source are credited.

possible entrapment of the fibrous cord [4-6]. Rubber dam insertion before cementation has also been tried in various case reports [7]. Ferreira [8] carried out a study on the cleaning effectiveness of dental floss used after cementation of implant crowns. The experimental “circular crossover superfloss technique and the traditional “C” shaped superfloss technique evaluated the cleaning activities of cement. The aim of this study is to evaluate the effect of the application liquid latex barrier during the cementation of cement-retained implant-supported restorations to prevent adhesion of the residual cement onto the implant abutment and to determine the effect of implant abutment margin position on the area and depth of the residual cement after cleaning operations. According to the results of this study, the experimental technique showed statistically significantly less cement after the cementation of the implant crowns compared to the traditional technique. Not one technique is favorable on the other and the clinician should choose what is more convenient to his/her skill.

MATERIAL AND METHODS

Preparation of Test Samples

The 20 implant analogs (Bego Implant Systems GmbH, Bremen/ Germany) were placed into acrylic blocks in such a way that directions and three-dimensional positions of the analogs (bukkolingual, cervicoinsizal and mesiodistal) would be the same. In order to simulate the gingiva a silicone gingival mask (Zermack Gingifast Elastic, Badia Polesine/ Italy) was applied. On the other hand, onto the transparent acrylic model UFI gel P (VOCO GmbH, Cuxhaven, Germany) adhesive was applied to connect the silicone gingival material. Thus, a flat silicone gingival surface was formed in such a way that the height of the anatomic titanium abutments (SUB-TEC Plus Ti-Pfosten gingiva height 2.5-4mm, Bego Implant Systems GmbH, Bremen/ Germany) which were used would be equal to the gingival height (4 mm) of the lingual aspect. They were scanned by digital measuring device (3 Shape D810, Copenhagen, Denmark) and the data was transferred to the computer environment. The restoration was designed in the form of upper first premolar teeth by using CAD software (3 Shape Dental Designer, 3 Shape A/S, Copenhagen, Denmark). A total of 20 polymethyl methacrylate (PMMA) temporary crowns were produced by using PMMA block (Dental PMMA, Tian Shwu Co., LTD./Taiwan) as a material by five-dimensional CAM unit (CORÍTEC 350i, imes-icore GmbH). **Figure 1** shows one of the test samples.



Figure 1. One of the test samples with the crown-abutment complex.

Cementation and cleaning operations

The models were divided into two groups as control (cleaning with conventional probe method) and experimental (cleaning with liquid latex barrier technique). In the experimental group, the latex band was tied after it was wrapped in a lap around the neck region below the margin of the abutment and the liquid latex barrier (BN NYE liquid latex) was carefully applied to the metal surface at the bottom of the step margin of the abutment by brush and left to dry completely (**Figure 2**). The abutments were carefully placed in the model and were torqued to 30 Ncm on the analogs. Screw head of the abutment was completely closed with teflon tape before the cementation process. The surface of the temporary crown below the gingiva was isolated with vaseline to prevent adhesion of the cement. In this study, zinc polycarboxylate cement (Poly-F® Plus / Bondex™, DENTSPLY DeTrey GmbH) which is the permanent cement for cementation process was used and the cement was prepared according to the manufacturer's instructions. The crowns were completely filled with the material and cemented under finger pressure by a single practitioner (**Figure 3**). After the cement was hardened the excess material was broken with a probe around the crown margin. Then, the latex tape was carefully removed by keeping it from the long section which was left for easy access by pulling it to the right and left and then upwards. **Figure 4** shows cementation procedure of the experimental group. In the control group, the crowns were completely filled with cement and adhered under the same standard pressure as the experimental group. After the cementation procedure for the hardened material, the cleaning operation was carried out carefully by using only a conventional probe without damaging the artificial gingiva. After this procedure, temporary crowns were accessed to screw entry by means of a hole drilled with a diamond rond drill in the predetermined occlusal access points and teflon was removed and the screw of the abutment was removed together with the abutment by reverse torque.

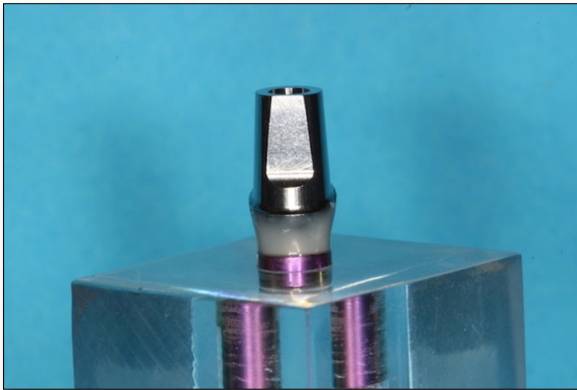


Figure 2. Liquid latex barrier is applied on the abutment surface (below the margin of the abutment).



Figure 3. Crowns cemented under standard pressure by applying a 5 kg axial force for 10 min.

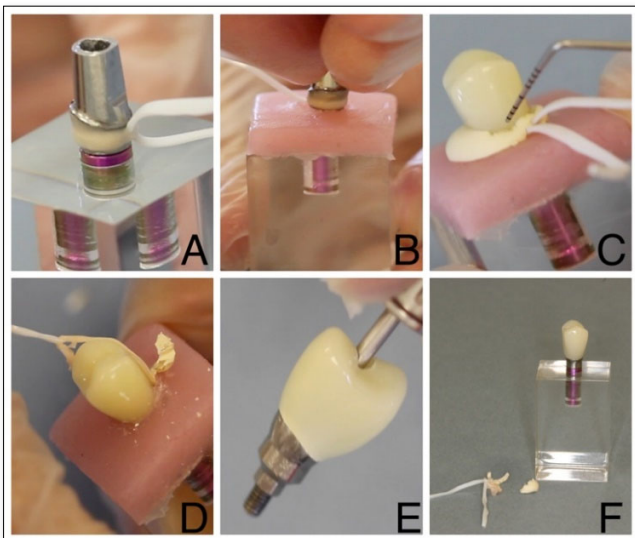


Figure 4. Cementation procedure of the experimental group. A, the latex band was tied after it was wrapped in a lap around the neck region below the margin of the abutment and the liquid latex barrier was carefully applied. B,

Abutment which the liquid latex barrier was applied carefully placed into the model. C, After the cement was hardened the excess material was broken with a probe around the crown margin. D, the latex band was carefully removed by keeping it from the long section which was left for easy access by pulling it to the right and left and then upwards. E, Crown-abutment complex was removed from the model. F, crown-abutment complex with cement and latex residues.

Measurement of residual excess cement

Crown-abutment complexes were examined under light microscope (SZ61/SZ51 Zoom Stereo Microscopes/DP12 Microscope Digital Camera System, OLYMPUS). For each model, digital images were taken from 4 regions (mesial, distal, buccal, lingual) under x20 magnification. **Figure 5,** shows microscope image of the abutment’s buccal surface under x20 magnification of control and experimental group. Recorded images were transferred to the computer environment and linear and field measurements were performed in ImageJ program (ImageJ and NIH Image Software; National Institute of Health, Bethesda, Md). Then, the following parameters were measured: The surface area covered by residual cement on the crown surface below the gingival level (area; mm²), the surface area covered by residual cement on the abutment surface below the gingiva level (area; mm²) and distance from the residual cement left uncleaned at the most apical part of the abutment to the level of the abutment margin (Depth; mm).

Analysis was performed with IBM SPSS Statistics Ver.23 (IBM Corp, Armonk, NY) software. The difference in terms of the total residual cement area between the conventional probe method (control group) and the liquid latex barrier technique (experimental group) was performed by Mann Whitney U test. In the control group, Kruskal Wallis test was also used to determine the difference in the area and depth of the residual cement left in the crown and abutment in 3 regions (buccal, aproximal and lingual). Since the difference was determined significant, pairwise comparison was performed by Dunn test. In all tests, p <0.05 was considered to have statistically significant results (**Figures 4 & 5**).

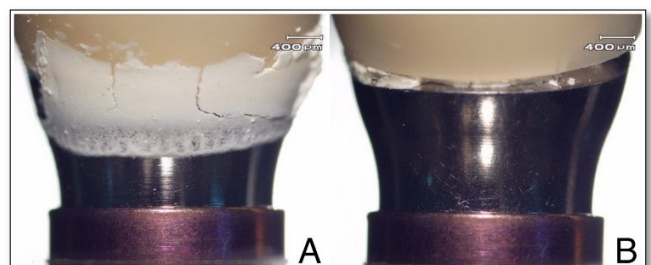


Figure 5. Microscope images of the abutment’s buccal surface under x20 magnification. A, control group. B, experimental group.

RESULTS

Surface area covered by residual cement

In the experimental group, no residual cement was observed in any part of the crown-abutment complexes. In the control group, the total surface area covered by residual cement below the gingiva is 6,72 (±4,10) mm². As a result; a statistically significant difference is observed between the control and experimental group in terms of total surface area covered by residual cement below the gingiva (p<0.001) (Table 1).

In the control group, when compared to 3 regions of the crown-abutment complex (buccal, aproximal and lingual) in terms of the surface area covered by residual cement on the crown surface; it was determined that the buccal side of the crown was 1,05 (±0,88) mm² on average, the aproximal side was 0,64 (±0,45) mm² and the lingual side was 0,00 (±0,00) mm². As a result; in the control group, the surface area covered by residual cement on the crown surface in the lingual region was found to be significantly lower than the crown surface in the aproximal region (p = 0.001) and the crown surface in the buccal region (p <0.001) (Figure 6).

In the control group, when compared to 3 regions of the crown-abutment complex (buccal, aproximal and lingual) in terms of the surface area covered by residual cement on the abutment surface; it was determined that the buccal side of the abutment was 2,80 (±1,82) mm² on average, proximal side was 1,43 (±1,08) mm² and lingual side was 0,81 (±0,66) mm². As a result; in the control group, the surface area covered by residual cement on the abutment surface in the lingual region was found to be significantly lower than the abutment surface in the buccal region (p = 0.001) (Figure 7).

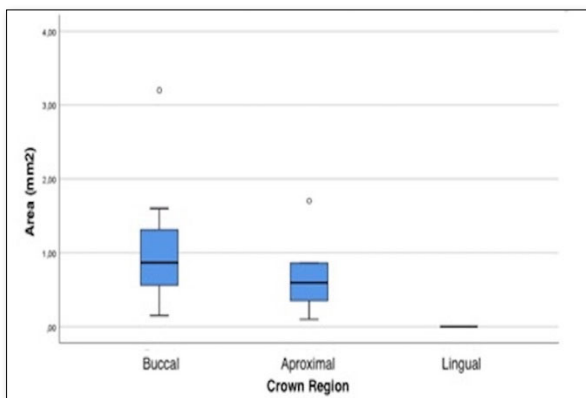


Figure 6. Boxplot for total residual cement on the crown surface in the buccal, aproximal and lingual regions of the control group.

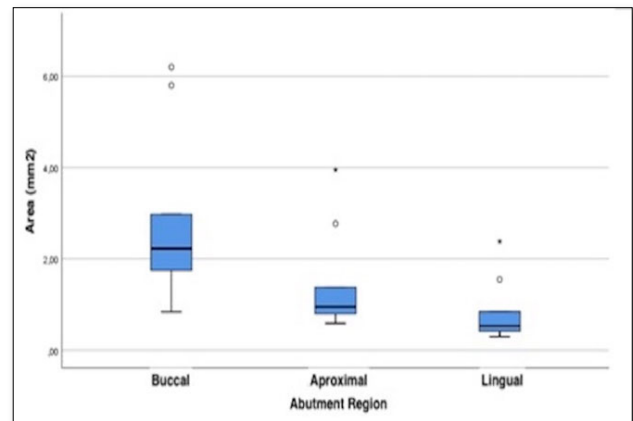


Figure 7. Boxplot for total residual cement on the abutment surface in the buccal, aproximal and lingual regions of the control group.

Depth of residual cement

In the control group, the mean depth of residual cement on the abutment surface was calculated as 3.10 mm in the buccal region, 2.75 mm in the aproximal region and 2.37 mm in the lingual region. The depth of residual cement on the abutment surface was determined mostly on the buccal, aproximal and lingual surface, respectively. As a result; a statistically significant difference has not been detected among the regions (buccal, aproximal and lingual) in terms of the depth of residual cement left on the abutment surface (p<0.054) (Figure 8).

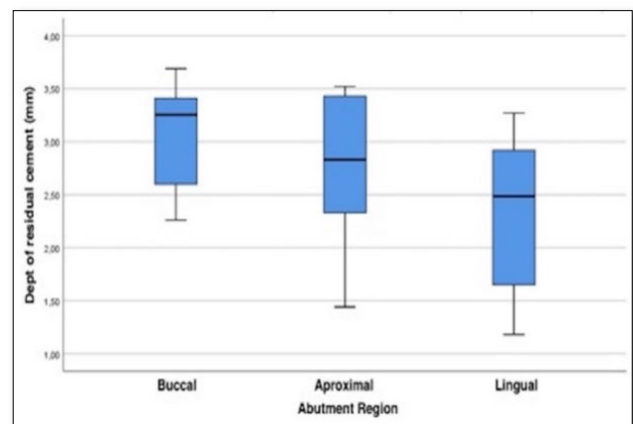


Figure 8. Boxplot for distance of the residual cement remaining on the abutment surface to the abutment margin in the buccal, aproximal and lingual regions (mm).

Table 1. Comparison of the control and experimental group in terms of surface area covered by residual cement.

	Crown- Abutment Complex	Group	Mean	Standard Deviation	Median	Minimum	Maximum	Percentile 25	Percentile 75
Crown	Buccal	Control Group	1.05	0.88	0.87	0.15	3.20	0.56	1.31
		Experimental Group	0.00	0.00	0.00	0.00	0.00	0.00	0.00
	Aproximal	Control Group	0.64	0.45	0.60	0.10	1.70	0.35	0.86
		Experimental Group	0.00	0.00	0.00	0.00	0.00	0.00	0.00
	Lingual	Control Group	0.00	0.00	0.00	0.00	0.00	0.00	0.00
		Experimental Group	0.00	0.00	0.00	0.00	0.00	0.00	0.00
	Total	Control Group	1.68	1.29	1.59	0.25	4.90	1.02	1.94
		Experimental Group	0.00	0.00	0.00	0.00	0.00	0.00	0.00
Abutment	Buccal	Control Group	2.80	1.82	2.23	0.84	6.20	1.75	2.98
		Experimental Group	0.00	0.00	0.00	0.00	0.00	0.00	0.00
	Aproximal	Control Group	1.43	1.08	0.95	0.59	3.95	0.80	1.38
		Experimental Group	0.00	0.00	0.00	0.00	0.00	0.00	0.00
	Lingual	Control Group	0.81	0.66	0.54	0.30	2.38	0.42	0.85
		Experimental Group	0.00	0.00	0.00	0.00	0.00	0.00	0.00
	Total	Control Group	5.04	2.91	4.18	2.33	11.70	3.04	6.99
		Experimental Group	0.00	0.00	0.00	0.00	0.00	0.00	0.00
Total	Buccal	Control Group	3.84	2.54	3.09	1.22	9.40	2.39	4.01
		Experimental Group	0.00	0.00	0.00	0.00	0.00	0.00	0.00
	Aproximal	Control Group	2.07	1.42	1.47	1.15	5.65	1.20	2.05
		Experimental Group	0.00	0.00	0.00	0.00	0.00	0.00	0.00
	Lingual	Control Group	0.81	0.66	0.54	0.30	2.38	0.42	0.85
		Experimental Group	0.00	0.00	0.00	0.00	0.00	0.00	0.00
	Total	Control Group	6.72	4.10	5.12	2.88	16.60	4.17	8.93
		Experimental Group	0.00	0.00	0.00	0.00	0.00	0.00	0.00

DISCUSSION

The placement of the implant supported abutment margins subgingivally is one of the possible causes of residual cement. According to the results of this study and previous ones, [11,12,15] the abutment margin should be placed as coronally as possible to minimize the amount of residual cement on the abutment surface. Clinically, this ideal situation is generally not possible due to the aesthetic concerns. Buser [16] has suggested that the restoration margin should be positioned 1-2 mm subgingivally in order to provide a suitable emergence profile and nowadays this position is still a preferred reference point for many clinicians.

In the studies conducted, [12,16,17] even if the crown-abutment margin was 1 mm subgingival, the residual cement was detected on the abutment surface. Agar [15] indicated in their study that it was impossible to clean all the residual cement if restoration margin was located 1.5-3mm below the gingival level. In the control group, it was observed that the residual cement adhering to the abutment surface could not be completely cleaned, even if the restoration margin level was in gingival level under the conditions of this *in-vitro* study. Based on the *in-vitro* and clinical studies conducted, [10,12,14,17] it was revealed that the deeper restoration margins were associated with more amounts of residual cements subgingivally. In this study it was determined that the mean amount of residual cement left on the abutment was 2,80 ($\pm 1,82$) mm² in buccal, 1,43 ($\pm 1,08$) mm² in approximal and 0,81 ($\pm 0,66$) mm² in lingual. These results confirm the previous studies. Considering the fact that the position of the abutment margin was the deepest in buccal and the lowest in lingual, the amount of residual cement increased as the margin location increased. When the distance of the residual cement was evaluated, it was observed that the residual cement was in deeper than the abutment margin, as the margins deepened. Considering that the depth measurements have been made from the crown-abutment margin, the fact that the mean depth values in the buccal region with a 1.5 mm subgingival margin are more than 3 mm, indicates that the cement remnants are above 4.5 mm subgingivally. It is impossible to access this region clinically.

In the literature, various methods have been used to determine the amount of residual cement [12-14]. These are methods such as making digital measurements by obtaining two dimensional images of residual cement with microscopy, measuring the residual cement, scaling the surface area on the photographs. The biggest disadvantage of the studies is that measurements of these photographs are two dimensional. In this study a two-dimensional measurement of surface area and depth through the microscope images was also accomplished. The disadvantage of two-dimensional imaging methods is that a part of the cement seen in one region is also seen from the

other region. Another issue to be considered is use of latex as a barrier. This may cause acute and severe issues in many patients [18].

It was also aimed to completely prevent adhesion of the residual cement to the abutment surface with the experimental liquid latex barrier technique which was applied in this study. Nevertheless, these results should be interpreted with caution. Even if the used materials, the cementation and the cleaning procedures have been as close as possible to the clinical reality, the artificiality of the study arrangement may not completely reflect the clinical reflection of the results. In this study, artificial gingival silicone simulating peri-implant soft tissue has been used for each cementation procedure; however, the soft gingival silicone that was used does not completely reflect the complex structure of the peri-implant sulcus and the interaction of a specific abutment configuration with the submucosal anatomy.

Due to the resistance applied by the silicone gingiva, it made it difficult for the crowns to fit properly during cementation. Therefore, there are differences in the restoration seating between the groups. Today BN NYE liquid latex is used as a makeup artist product recommended for skin use. In our opinion, biocompatibility tests should be done for this material to be used in the mouth. Because we don't know it may leave any kind of monomers. In the applicability of this material *in vivo* we need to know more about its contents. Therefore, further clinical research is needed to confirm or reject the results obtained. The lack of restoration contact in prepared model and the structure of artificial gingiva are the limitations due to the fact that this study is *in vitro*. The latex only prevents cement getting onto the implant materials. However, there are studies indicating that implant failure may also occur due to cement remaining in the peri-implant sulcus [19].

CONCLUSIONS

Within the limitations of this study, the following conclusions have been obtained:

1. The cementation and cleaning of the cement-retained implant-supported restorations is an operation that needs to be performed precisely. The conventional probe cleaning procedure is not completely effective in removing the residual cement adhering to the abutment surface.
2. As the deeper of the position of the margin in the conventional probe cleaning procedure, the amount and depth of the uncleaned residual cement also increase.
3. Liquid latex barrier technique has been safer cement cleaning method by preventing the residual cement on the abutment surface under the *in-vitro* conditions.
4. This material can be developed by implant companies and produced by coating the gingival surface of

fabricated stock abutments. For this, advanced material studies are needed. This *in vitro* study may lead to new studies.

REFERENCES

- Chee WW, Duncan J, Afshar M, Moshaverinia A (2013) Evaluation of the amount of excess cement around the margins of cement-retained dental implant restorations: The effect of the cement application method. *J Prosthet Dent* 109: 216-221.
- Michalakis KX, Hirayama H, Garefis PD (2003) Cement-retained versus screw-retained implant restorations: A critical review. *Int J Oral Maxillofac Implants* 18: 719-728.
- Gapski R, Neugeboren N, Pomeranz AZ, Reissner MW (2008) Endosseous implant failure influenced by crown cementation: A clinical case report. *Int J Oral Maxillofac Implants* 23(5): 943-946.
- Pauletto N, Lahiffe BJ, Walton JN (1999) Complications associated with excess cement around crowns on osseointegrated implants: A clinical report. *Int J Oral Maxillofac Implants* 14: 865-868.
- Tomson PL, Butterworth CJ, Walmsley AD (2004) Management of peri-implant bone loss using guided bone regeneration: A clinical report. *J Prosthet Dent* 92: 12-16.
- Wadhvani C, Rapoport D, La Rosa S, Hess T, Kretschmar S (2012) Radiographic detection and characteristic patterns of residual excess cement associated with cement-retained implant restorations: A clinical report. *J Prosthet Dent* 107: 151-157.
- Lorenz B, Kang T (2013) Treating peri-implantitis using a combined regenerative/resective procedure: A case report. *Compend Contin Educ Dent* 34: e57-e61.
- Ramer N, Wadhvani CM, Kim A, Hershman D (2014) Histologic findings within peri-implant soft tissue in failed implants secondary to excess cement: Report of two cases and review of literature. *N Y State Dent J* 80: 43.
- Wilson TG (2009) The positive relationship between excess cement and peri-implant disease: A prospective clinical endoscopic study. *J Periodontol* 80: 1388-1392.
- Linkevicius T, Puisys A, Vindasiute E, Linkeviciene L, Apse P (2013) Does residual cement around implant-supported restorations cause peri-implant disease? A retrospective case analysis. *Clin Oral Implants Res* 24: 1179-1184.
- Linkevicius T, Vindasiute E, Puisys A, Linkeviciene L, Maslova N, et al. (2013) The influence of the cementation margin position on the amount of undetected cement. A prospective clinical study. *Clin Oral Implants Res* 24: 71-76.
- Linkevicius T, Vindasiute E, Puisys A, Peciuliene V (2011) The influence of margin location on the amount of undetected cement excess after delivery of cement-retained implant restorations. *Clin Oral Implants Res* 22: 1379-1384.
- Patel D, Invest JC, Tredwin CJ, Setchell DJ, Moles DR (2009) An analysis of the effect of a vent hole on excess cement expressed at the crown-abutment margin for cement-retained implant crowns. *J Prosthodont* 18: 54-59.
- Sancho-Puchades M, Cramer D, Ozcan M, Sailer I, Jung RE, et al. (2017) The influence of the emergence profile on the amount of undetected cement excess after delivery of cement-retained implant reconstructions. *Clin Oral Implants Res* 28: 1515-1522.
- Agar JR, Cameron SM, Hughbanks JC, Parker MH (1997) Cement removal from restorations luted to titanium abutments with simulated subgingival margins. *J Prosthet Dent* 78: 43-47.
- Belser UC, Buser D, Hess D, Schmid B, Bernard JP (2000) Aesthetic implant restorations in partially edentulous patients--a critical appraisal. *Periodontol* 17: 132-150.
- Wasiluk G, Chomik E, Gehrke P, Pietruska M, Skurska A (2017) Incidence of undetected cement on CAD/CAM monolithic zirconia crowns and customized CAD/CAM implant abutments. A prospective case series. *Clin Oral Implants Res* 28: 774-778.
- Keh C, Soon Y, Wong LS (2000) Latex allergy: An emerging problem in theatres. *Int J Clin Pract* 54(9): 582-584.
- Wilson TG Jr, Valderrama P, Burbano M, Blansett J, Levine R, et al. (2015) Foreign bodies associated with peri-implantitis human biopsies. *J Periodontol* 86(1): 9-15.